

# 2023 WSU CONGRESSIONAL & LEGISLATIVE STAFF TOUR

## WSU PULLMAN & SPOKANE

Monday, August 7 – Wednesday, August 9

### MONDAY, AUGUST 7 | PULLMAN

- 1:30PM Meet in hotel lobby at **Residence Inn Pullman**  
*1255 NE North Fairway Rd, Pullman, WA 99163*  
NOTE: Group will divide up into four vehicles and shuttle to Martin Stadium
- 2:00PM **Panel on Name, Image and Likeness and Gesa Field Tour**  
*Club Level, Martin Stadium, 1775 NE Stadium Way, Pullman, WA 99164*  
PAT CHUN | Director, WSU Athletics  
JAKE DICKERT | WSU Football Coach  
WSU Student Athletes
- 3:30PM Travel back to hotel, check-in and break
- 5:00PM Guests reconvene in hotel lobby
- 5:15PM Travel to Dinner  
NOTE: Group will divide up into four vehicles and shuttle to Brelsford WSU Visitor Center
- 5:30PM Dinner at **Brelsford WSU Visitor Center**  
*150 E Spring St, Pullman, WA 99163*
- 7:30PM Return to hotel and overnight at Residence Inn Pullman

### TUESDAY, AUGUST 8 | PULLMAN

- 7:45AM Guests meet in hotel lobby and travel to campus  
NOTE: Group will divide up into four vehicles and shuttle to Green Lots 3 (near Washington Building)
- 8:00AM **Cougar Health Services**  
*Washington Building, 1125 NE Washington St, Pullman, WA 99164*  
JOEL SCHWARTZKOPF | Assistant Vice Chancellor for Student Health & Wellbeing; Executive Director, Cougar Health Services
- 8:45AM Walk to ROAR in Cleveland Hall
- 9:00AM **ROAR – Responsibility, Opportunity, Advocacy and Respect**  
*Cleveland Hall Atrium*  
KRISTI TIPPETT | Interim Director, WSU ROAR
- 9:45AM Walk to Veteran’s Center in Holland / Terrell Library
- 10:00AM **WSU Veteran’s Center**  
*Holland and Terrell Library, Room 120BA*

PENNY MARTINEZ | Manager of Veterans and Military Affiliated Students

10:20AM Walk to Women's Center / Rosario's Closet in Wilson-Short Hall

10:25AM **Women's Center and Rosario's Closet**

*Wilson-Short Hall, Ground Floor, Room 8*

AMY SHARP | Director, WSU Women\*s Center

10:45AM Walk to Compton Union Building (CUB)

10:50AM **Multicultural Student Services, LGBTQ+ Center and First Gen Center**

*Compton Union Building (CUB) Room 409*

STEVE BISCHOFF | Director, Multicultural Student Services

11:20AM Walk to WSU Food Pantry

11:25AM **WSU Food Pantry**

*Ground Floor of Compton Union Building (CUB) near WSECU*

BEN CALABRETTA | Director, Center for Civic Engagement

11:40AM Walk upstairs to CUB 212 Jr Ballroom West

NOTE: Guests can grab boxed lunches and find a place to sit. Short break before presentation at noon.

12:00PM **Access & Opportunity**

*CUB 212 Jr Ballroom West*

LUCI LOERA | Executive Director, Office for Access and Opportunity

MICHAEL HEIM | Director, Migrant Education Student Access & Support (MESAS) (CAMP/HEP)

CARRIE BEN-YISRAEL | Director, TRIO Student Support Services Program

SAMUEL RODRIGUEZ-FLECHA | Director, Team Mentoring Program (TMP)

DR. RAYMOND HERRERA | Associate Vice Provost, Graduate School PI/Director, McNair Scholars Program

WSU TRIO SSS and CAMP Students

1:00PM Walk to Lighty Building

1:30PM **Recruitment, Enrollment and Retention Panel**

*Lighty 405*

SAICHI OBA | Vice Provost of Enrollment Management

ANDREW BREWICK | Assistant Vice Provost for Enrollment Management and Director of Admissions

MICHELLE LEWIS | Assistant Vice President of Enrollment Planning

STEVE BISCHOFF | Director, Multicultural Student Services

3:00PM Break (15 min)

3:30PM **Campus Security**

*Lighty 405*

GARY JENKINS | WSU Chief of Police

SEAN GREEN | Assoc. Vice Chancellor, Facilities & Operations, WSU

MEG AUTRY | Director, Housing & Residence Life, WSU

LOREN BROWN | Licensed Psychologist, Interim Director WSU Counseling & Psychological Services

DEN BOWKER | Information Systems Director, Facilities, WSU

- 4:45PM Travel back to hotel
- 5:00PM Break (30 min)
- 5:30PM Guests reconvene in hotel lobby
- 5:45PM Travel to Dinner  
NOTE: Group will divide up into four vehicles and shuttle to Eggert Family Organic Farm
- 6:00PM Dinner at **Eggert Family Organic Farm**  
*Animal Sciences Rd, Pullman, WA 99163*
- 7:50PM Return to hotel and overnight at Residence Inn Pullman

## **WEDNESDAY, AUGUST 9 | SPOKANE**

- 7:45AM Guests meet in hotel lobby before departure to Spokane  
NOTE: Group will divide up into four vehicles and shuttle up to WSU Spokane
- 8:00AM Depart hotel for WSU Spokane  
*600 N Riverpoint Blvd, Spokane, WA 99202*
- 9:45AM Arrive at WSU Spokane Campus  
NOTE: Group will park in Orange Lot 1 outside Spokane Academic Center (SAC)
- 9:55AM **Welcome to WSU Spokane**  
*Health, Education and Research Building (HERB) #432*  
DARYLL B. DEWALD | Executive Vice President and Chancellor of WSU Health Sciences Spokane
- 10:00AM **Native American Health Sciences Center Tour**  
*665 N. Riverpoint Blvd, Spokane, WA 99202*  
NAOMI BENDER | Director, Native American Health Sciences, Center for Native American Health  
GERALD CROWSHOE | Assistant Director, Center for Native American Health  
JANELLE WHIPPLE | Programs and Student Services Coordinator, Center for Native American Health
- 11:00AM **Sleep & Performance Research Center Tour**  
*412 E. Spokane Falls Blvd, Spokane, WA 99210*  
DEVON HANSEN | Asst. Prof., Dept. of Translational Medicine & Physiology, Elson S. Floyd College of Medicine  
KIMBERLY HONN | Assoc. Prof., Dept. of Translational Medicine & Physiology, Elson S. Floyd College of Medicine  
STEVE JAMES | Asst. Prof., Dept. of Translational Medicine & Physiology, Elson S. Floyd College of Medicine  
COURTNEY KURINEC | Asst. Prof., Dept. of Translational Med. & Physiology, Elson S. Floyd College of Medicine.  
BRIEANN SATTERFIELD | Asst. Prof., Dept. of Translational Med. & Physiology, Elson S. Floyd College of Medicine.  
HANS VAN DONGEN | Prof., Dept. of Translational Medicine & Physiology, Elson S. Floyd College of Medicine;  
Director, Sleep & Performance Research Center

- 12:00PM **Substance Use Disorder Panel Discussion & Lunch**  
*Nursing (SNRS) Building #205*  
*Moderated by:* CELESTINA BARBOSA-LEIKER | Exec. Vice Chancellor, WSU Health Sciences Spokane  
 DAWN DEWITT | Sr. Assoc. Dean, Collaboration for InterProfessional Health Educ. Research & Scholarship (CIPHERS)  
 CONNIE REMSBERG | Associate Professor, College of Pharmacy and Pharmaceutical Sciences  
 JOHN ROLL | Vice Dean for Research, Elson S. Floyd College of Medicine  
 MARIAN WILSON | Associate Professor, College of Nursing
- 1:15PM **College of Nursing Center for Experiential Learning & Interprofessional Education Tour**  
*Nursing (SNRS) Building #217*  
 DAWN DEPRIEST | Director of Experiential Learning, College of Nursing  
 ANNE MASON | Associate Dean of Academic Affairs, College of Nursing  
 JENNIFER ROBINSON | Assoc. Vice President for Interprofessional Educ., Health Sci. Spokane
- 2:30PM **Autism & Neurodevelopmental Clinic and Partnership w/ Range Community Clinic Tour**  
*Health Sciences Building (HSB) Atrium*  
 GEORGINA LYNCH | Co-Director, Autism & Neurodevelopmental Program of Excellence, Dept. of Speech and Hearing Sciences, Elson S. Floyd College of Medicine  
 AMY MEREDITH | Chair, Department of Speech and Hearing Sciences, Elson S. Floyd College of Medicine  
 JIM ZIMMERMAN | Chief Executive Officer & Director, Range Community Clinic
- 3:20PM **Concluding Remarks**  
*Health Sciences Building (HSB) Atrium*
- 3:45PM Load up in vehicles and head to Spokane International Airport  
*9000 W Airport Drive, Spokane, WA 99224*
- 4:00pm Arrive at Spokane International Airport
- 5:45PM Depart via Alaska Airlines #2429



# WSU LEGISLATIVE & CONGRESSIONAL STAFF TOUR

August 7 – 9, 2023 | ATTENDEES LIST

NAME	TITLE	AFFILIATION
Michele Alishahi	Fiscal Analyst	Washington State Senate Committee Services
Kevin Chang	Legislative Assistant	Office of U.S. Senator Maria Cantwell
Marc Cummings	President and CEO	Life Science Washington
Liz Fortunato	Consultant	Desimone Consulting
Miller Freeman	Staff Counsel	Washington State Senate Republican Caucus
Ruby Gaston	Central Washington Representative	Office of U.S. Representative Kim Schrier
Ryan Giannini	Staff Counsel	Washington State Senate Committee Services
Jason Greene II	Legislative Aide	Office of U.S. Senator Patty Murray
Shea Hamilton	Senior Budget Advisor to the Governor	Office of Financial Management
Arlen Harris	Legislative Director	State Board for Community & Technical Colleges
Alicia Kinne-Clawson	Higher Educ. and Workforce Dev. Committee Coordinator	Washington State Senate
Curtis Knapp	Public Affairs Manager	Life Science Washington
Abby Laver	Legislative Aide	United States Senate Appropriations
Gala Loayza	Legislative Assistant	Office of U.S. Representative Rick Larsen
Ramona Nabors	Higher Educ. Budget Advisor to the Governor	Office of Financial Management



James Payne	Legislative Aide	Office of U.S. Representative Cathy McMorris Rodgers
Alyssa Quinn	Legislative Correspondent	Office of U.S. Representative Suzan DelBene
Kelsey Rote	Capital Budget Advisor	Office of Financial Management
Maggie Sauerhage	Legislative Fellow	Office of U.S. Representative Marie Gluesenkamp Perez
Riley Smith	Eastern WA Outreach Director	Office of U.S. Senator Maria Cantwell
Shannon Smith	Senior Counsel	U.S. Senate Commerce Committee - Majority
Megan Tudor	Committee Assistant	Washington State Senate Committee Services

## ATTENDEES



**MICHELE ALISHAHI**  
Fiscal Analyst, Washington State Senate Committee Services



**CURTIS KNAPP**  
Public Affairs Manager, Life Science Washington



**KEVIN CHANG**  
Legislative Assistant, Office of U.S. Senator Maria Cantwell



**ABBY LAVER**  
Legislative Aide, United States Senate Appropriations



**MARC CUMMINGS**  
President and CEO, Life Science Washington



**GALA LOAYZA**  
Legislative Assistant, Office of U.S. Rep. Rick Larsen



**LIZ FORTUNATO**  
Consultant, Desimone Consulting



**RAMONA NABORS**  
Higher Education Budget Advisor to the Gov., Office of Financial Management



**MILLER FREEMAN**  
Staff Counsel, Washington State Senate Republican Caucus



**JAMES PAYNE**  
Legislative Aide, Office of U.S. Representative Cathy McMorris Rodgers



**RUBY GASTON**  
Central Washington Rep., Office of U.S. Rep. Kim Schrier



**ALYSSA QUINN**  
Legislative Correspondent, Office of U.S. Rep. Suzan DelBene



**RYAN GIANNINI**  
Staff Counsel, Washington State Senate Committee Services



**KELSEY ROTE**  
Capital Budget Advisor, Office of Financial Management



**JASON GREENE II**  
Legislative Aide, Office of U.S. Senator Patty Murray



**MAGGIE SAUERHAGE**  
Legislative Fellow, Office of U.S. Rep. Marie Gluesenkamp Perez



**SHEA HAMILTON**  
Senior Budget Advisor to the Governor, Office of Financial Management



**RILEY SMITH**  
Eastern Washington Outreach Director, Office of U.S. Senator Maria Cantwell



**ARLEN HARRIS**  
Legislative Director, State Board for Community and Technical Colleges



**SHANNON SMITH**  
Senior Counsel, U.S. Senate Commerce Committee - Majority



**ALICIA KINNE-CLAWSON**  
Higher Educ. and Workforce Dev. Committee Coordinator, Washington



**MEGAN TUDOR**  
Committee Assistant, Washington State Senate Committee Services

FOLLOW ALONG OR SHARE YOUR TOUR PHOTOS USING:

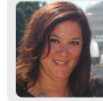
**#WSUStaffTour2023**

## EVENT ORGANIZERS & CONTACTS

### WSU OFFICE OF EXTERNAL AFFAIRS AND GOVERNMENT RELATIONS



**CHRIS MULICK**  
Interim Vice President  
253-579-2461



**GLYNDA BECKER FENTER**  
AVP, Fed. Engagement & Advocacy, Exec. Dir., WSU DC  
202-340-5844



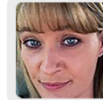
**PATTI STAUFFER**  
Dir. Health Sci. Public Policy and Advocacy  
502-655-0592



**DANA ULRICH**  
Director of Seattle and Regional Relations  
314-308-8797



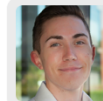
**KATIE GZIRYAN**  
Director of Public Affairs  
202-491-6470



**MICHELE MCCARVER**  
Assistant to the Vice President  
509-432-4845



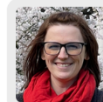
**JACOB DOWD**  
Assistant Director, Federal Relations  
402-730-2857



**CONNOR HAGGERTY**  
Assistant Director, State Relations  
360-609-7565



**CAT AMORTEGUI**  
Policy & Affairs Coord. for State Relations  
509-392-9900



**HEATHER DYKSTRA**  
Communications Consultant  
360-909-7564

### TOUR LOCATION ADDRESSES

#### WSU PULLMAN CAMPUS

1775 NE Stadium Way, Pullman, WA

#### WSU SPOKANE CAMPUS

412 E Spokane Falls Blvd, Spokane, WA

SEE QR CODE BELOW FOR MAPS OF STAFF TOUR DESTINATIONS

### LODGING & TRANSPORTATION ADDRESSES

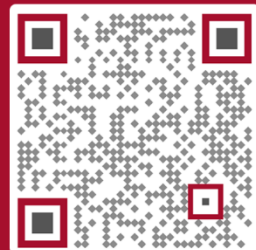
#### SPOKANE INT'L AIRPORT

9000 West Airport Drive,  
Spokane, WA 99224 | 509-455-6455

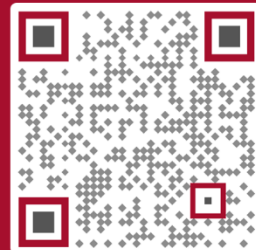
#### RESIDENCE INN MARRIOTT

1255 NE North Fairway Rd,  
Pullman, WA 99163 | 509-332-4400

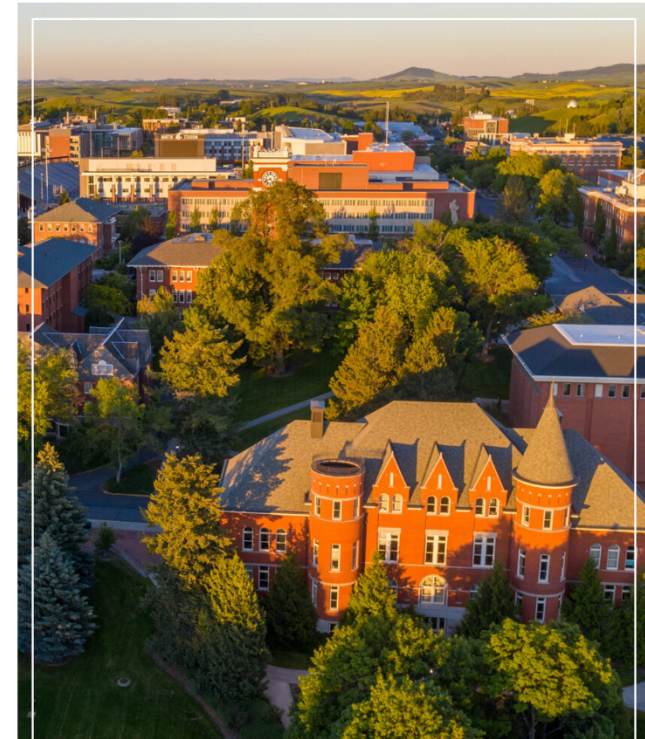
#### PULLMAN & SPOKANE CAMPUS MAPS



#### LEG. & CONG. STAFF TOUR WEBSITE



WASHINGTON STATE  
UNIVERSITY



## LEGISLATIVE & CONGRESSIONAL STAFF TOUR

AUGUST 7-9, 2023

*Pullman & Spokane*



## AGENDA

### MONDAY, AUGUST 7, 2023

- 1:30PM Meet in hotel lobby at Residence Inn Pullman
- 2:00PM **Name, Image, and Likeness & Field Tour Club Level, Martin Stadium**  
PAT CHUN | JAKE DICKERT | WSU STUDENT ATHLETES
- 3:30PM Travel back to hotel / check-in and brief break
- 5:00PM Reconvene in hotel lobby and travel to dinner
- 5:30PM **Dinner at Brelsford WSU Visitor Center**  
150 E Spring St, Pullman, WA 99163
- 7:30PM Return to hotel / overnight at Residence Inn

### TUESDAY, AUGUST 8, 2023

- 7:45AM Meet in hotel lobby and travel to campus
- 8:00AM **Cougar Health Services**  
Washington Building  
JOEL SCHWARTZKOPF
- 9:00AM **WSU ROAR**  
Cleveland Hall Atrium  
KRISTI TIPPETT
- 10:00AM **WSU Veteran's Center**  
Holland and Terrell Library, Room 120BA  
PENNY MARTINEZ
- 10:25AM **Women's Center & Rosario's Closet**  
Wilson-Short Hall, Ground Floor, Room 8  
AMY SHARP
- 10:50AM **Multicultural Student Services, LGBTQ+ Center & First Gen Center**  
Compton Union Building (CUB), Room 409  
STEVE BISCHOFF
- 11:25AM **WSU Food Pantry**  
Ground Floor of Compton Union Bldg (CUB)  
BEN CALABRETTA
- 12:00PM **Access & Opportunity**  
CUB 212 Jr Ballroom West  
L. LOERA | M. HEIM | C. BEN-YISRAEL | R. HERRERA  
S. RODRIGUEZ-FLECH | TRIO & CAMP STUDENTS
- 1:30PM **Recruitment, Enrollment & Retention**  
Lighty 405  
SAICHI OBA | ANDREW BREWICK | MICHELLE LEWIS
- 3:30PM **Campus Security**  
Lighty 405  
GARY JENKINS | SEAN GREENE | MEG AUTRY  
LOREN BROWN | DEN BOWKER

## AGENDA

### TUESDAY, AUGUST 8, 2023 (cont'd)

- 4:45PM Travel back to hotel / check-in and brief break
- 5:30PM Reconvene in hotel lobby and travel to dinner
- 6:00PM **Dinner at Eggert Family Organic Farm**  
Animal Sciences Rd, Pullman, WA 99163
- 7:50PM Return to hotel / overnight at Residence Inn

### WEDNESDAY, AUGUST 9, 2023

- 7:45AM Meet in hotel lobby and travel to WSU Spokane
- 9:45AM Arrive at WSU Health Sciences Spokane  
NOTE: Park in Orange Lot 1 outside SAC
- 9:55AM **Welcome to WSU Spokane**  
Health Education & Research (HERB) Bldg #432  
DARYLL B. DEWALD
- 10:00AM **Native American Health Sci Center**  
665 N. Riverpoint Blvd, Spokane, WA  
NAOMI BENDER | GERALD CROWSHOE  
JANELLE WHIPPLE
- 11:00AM **Sleep & Performance Research Center**  
412 E. Spokane Falls Blvd, Spokane, WA  
DEVON HANSEN | KIMBERLY HONN | STEVE JAMES  
COURTNEY KURINEC | BRIEANN SATTERFIELD  
HANS VAN DONGEN
- 12:00PM **Substance Use Disorder Panel & Lunch**  
Nursing (SNRS) Building #205  
CELESTINA BARBOSA-LEIKER | DAWN DEWITT  
CONNIE REMSBERG | JOHN ROLL | MARIAN WILSON
- 1:15PM **College of Nursing / Experiential Learning & Interprofessional Education**  
Nursing (SNRS) Building #217  
DAWN DEPRIEST | ANNE MASON | JENNIFER ROBINSON
- 2:30PM **Autism & Neurodevelopmental Clinic / Partnership w/ Range Community Clinic**  
Health Sciences Building (HSB) Atrium  
GEORGINA LYNCH | AMY MEREDITH | JIM ZIMMERMAN
- 3:20PM **Concluding Remarks**  
Health Sciences Building (HSB) Atrium
- 3:45PM Load up in vehicles / depart for Spokane Airport
- 5:45PM Depart via GEG to SEA | Alaska Airlines #2429
- End of Tour – **THANK YOU FOR JOINING US!**

## UNIVERSITY PRESENTERS & GUESTS



**KIRK SCHULZ**  
System President,  
Washington State Univ.



**ELIZABETH CHILTON**  
Provost, WSU Pullman  
Chancellor, & Exec. VP



**NOEL SCHULZ**  
First Lady & Professor,  
Elec. Eng. & Comp Sci.



**DARYLL B. DEWALD**  
Exec. VP & Chancellor,  
WSU Health Sci. Spok.

**MEG AUTREY** Director, Housing & Residence Life, WSU

**CELESTINA BARBOSA-LEIKER** Executive Vice Chancellor, WSU Health Sciences Spokane

**CARRIE BEN-YISRAEL** Director, TRIO Student Support Services

**NAOMI BENDER** Director, Native American Health Sci., Center for Native American Health

**STEVE BISCHOFF** Director, Multicultural Student Services

**DEN BOWKER** Information Systems Director, Facilities, WSU

**ANDREW BREWICK** Assistant Vice Provost, Enrollment Management; Director of Admissions

**LOREN BROWN** Licensed Psychologist, Interim Director, WSU Counseling & Psychological Services

**BEN CALABRETTA** Director, Center for Civic Engagement

**PAT CHUN** Director, WSU Athletics

**GERALD CROWSHOE** Asst. Dir., Center for Native American Health

**DAWN DEPRIEST** Director of Experiential Learning, College of Nursing

**DAWN DEWITT** Sr. Assoc. Dean, Collab. for InterProf. Health Educ. Research & Scholarship

**JAKE DICKERT** Football Coach, Athletics

**SEAN GREENE** Assoc. Vice Chancellor, Facilities & Operations

**DEVON HANSEN** Asst. Prof., Translational Medicine & Physiology, College of Medicine

**MICHAEL HEIM** Director, Migrant Educ. Student Access & Support (MESAS)

**RAYMOND HERRERA** Assoc. Vice Provost, Grad. School Pl/Director, McNair Scholars Prog.

**MARGARET HOLT** Chief of Staff, WSU Spokane

**KIMBERLY HONN** Assoc. Prof., Translational Medicine & Physiology, College of Medicine

**STEVE JAMES** Asst. Prof., Translational Medicine & Physiology, College of Medicine

**GARY JENKINS** Chief of Police, WSU

**CHRIS KEANE** Vice President for Research

**COURTNEY KURINEC** Asst. Prof. Transl. Medicine & Physiology, College of Medicine

**MICHELLE LEWIS** Asst. Vice President, Enrollment Planning

**LUCI LOERA** Executive Director, Access and Opportunity, WSU

**GEORGINA LYNCH** Co-Dir., Autism & Neurodev. Prog. of Excell., Speech & Hearing Sciences, College of Medicine

**PENNY MARTINEZ** Manager, Veterans & Military Affiliated Students, Veteran's Center

**ANNE MASON** Associate Dean of Academic Affairs, College of Nursing

**AMY MEREDITH** Chair, Dept. of Speech and Hearing Sciences, College of Medicine

**SAICHI OBA** Vice Provost, Enrollment Management

**CONNIE REMSBERG** Associate Prof., College of Pharmacy & Pharmaceutical Sci.

**JENNIFER ROBINSON** Assoc. Vice President for Interprofessional Educ., WSU Health Sciences Spokane

**SAMUEL RODRIGUEZ-FLECHA** Director, Team Mentoring Program (TMP)

**JOHN ROLL** Vice Dean for Research, College of Medicine

**BRIEANN SATTERFIELD** Asst. Prof., Dept. of Translational Medicine & Physiology, College of Medicine

**JOEL SCHWARTZKOPF** Asst. Vice Chancellor, Student Health & Wellbeing; Exec. Dir., Cougar Health Services

**AMY SHARP** Dir., WSU Women's Center

**KRISTI TIPPETT** Interim Dir., WSU ROAR

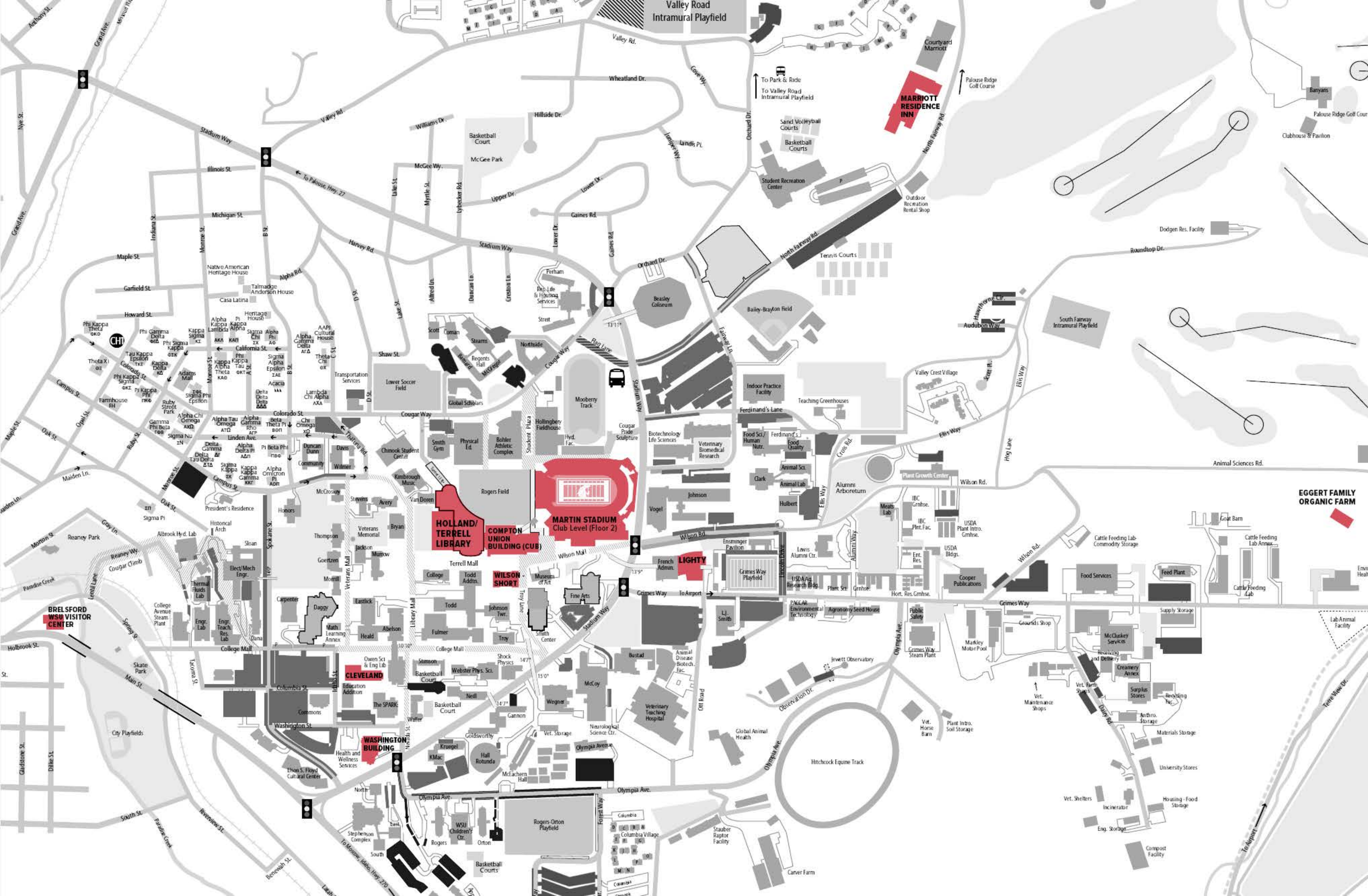
**HANS VAN DONGEN** Prof., Transl. Med. & Physiology, College of Medicine; Dir., Sleep & Performance Research Center

**JANELLE WHIPPLE** Prog. and Student Services Coordinator, Center for Native American Health

**MARIAN WILSON** Associate Professor, College of Nursing

**JIM ZIMMERMAN** CEO & Director, Range Community Clinic





Valley Road Intramural Playfield

**MARRIOTT RESIDENCE INN**

**HOLLAND/TERRELL LIBRARY**

**COMPTON UNION BUILDING (CUB)**

**MARTIN STADIUM Club Level (Floor 2)**

**WILSON SHORT**

**LIGHTY**

**EGERT FAMILY ORGANIC FARM**

**BRELSFORD WSU VISITOR CENTER**

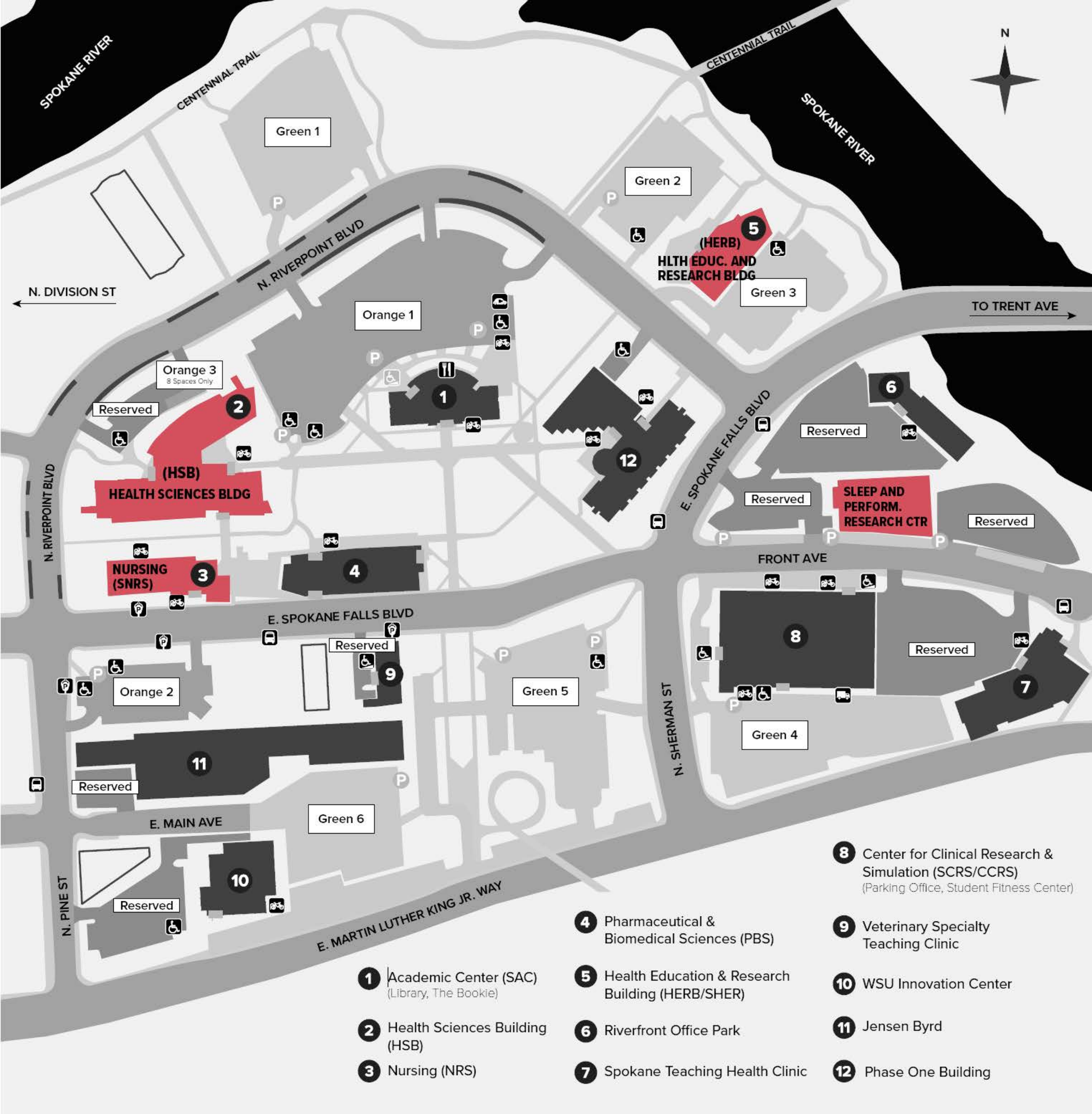
**CLEVELAND**

**WASHINGTON BUILDING**

Hitchcock Equine Track

To Airport





- 1** Academic Center (SAC)  
(Library, The Bookie)
- 2** Health Sciences Building (HSB)
- 3** Nursing (NRS)
- 4** Pharmaceutical & Biomedical Sciences (PBS)
- 5** Health Education & Research Building (HERB/SHER)
- 6** Riverfront Office Park
- 7** Spokane Teaching Health Clinic
- 8** Center for Clinical Research & Simulation (SCRS/CCRS)  
(Parking Office, Student Fitness Center)
- 9** Veterinary Specialty Teaching Clinic
- 10** WSU Innovation Center
- 11** Jensen Byrd
- 12** Phase One Building